

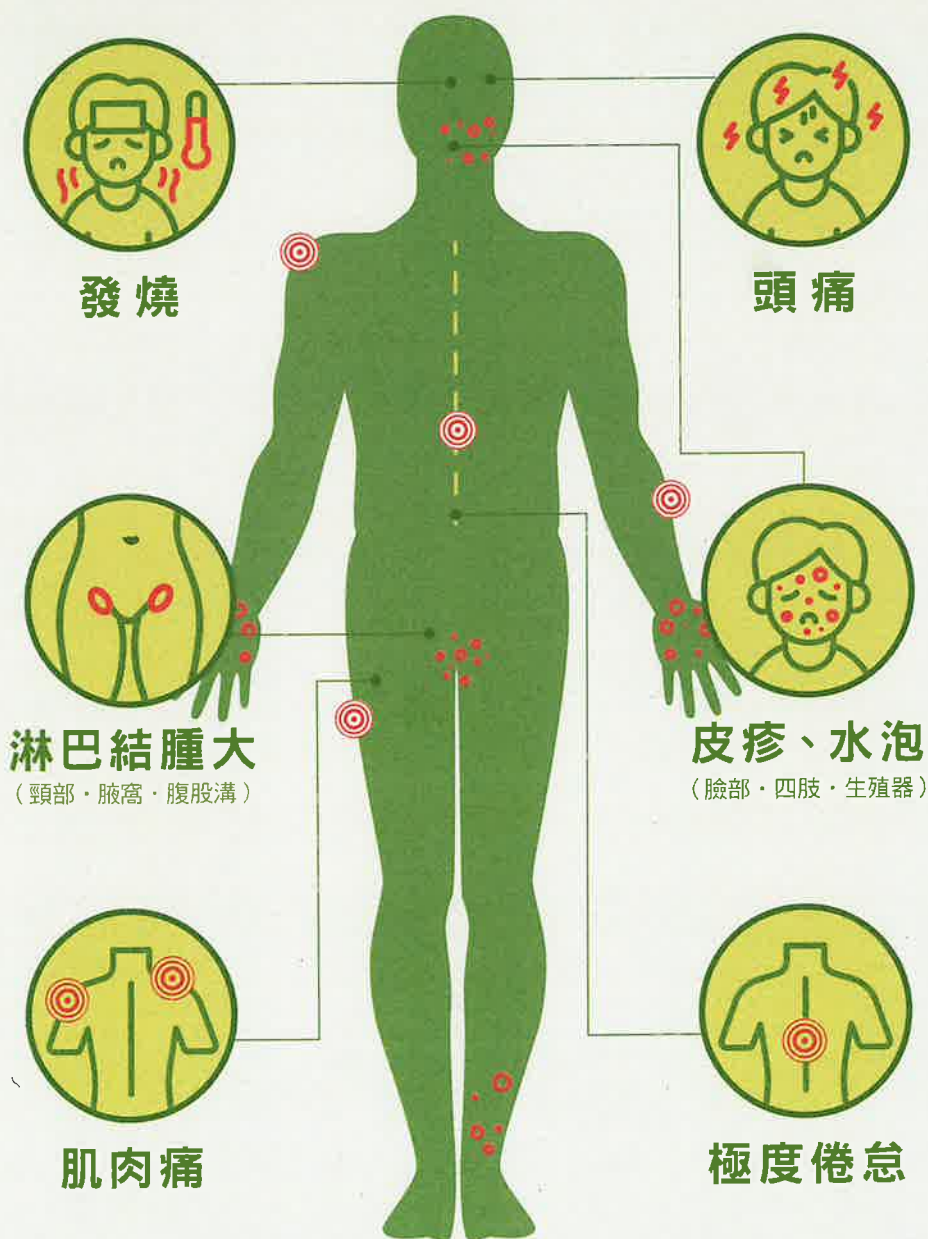
國際旅行請注意

# 猴痘是什麼？

猴痘（MPOX）是一種人畜共通傳染疾病。在流行地區以外，已出現人與人間持續傳播。



## 常見症狀



## 傳染方式



與感染者親密接觸，或直接接觸到病患的呼吸道分泌物、損傷的皮膚或黏膜，或被汙染之物品



直接接觸感染動物



飛沫傳播

## 國際疫情

目前多國出現猴痘疫情，含歐洲、美洲等國家。



旅客有疑似症狀，請盡速就醫，並主動告知旅遊史及接觸史



衛生福利部疾病管制署  
TAIWAN CDC



[www.cdc.gov.tw](http://www.cdc.gov.tw)



1922防疫達人

[www.facebook.com/TWCDC](https://www.facebook.com/TWCDC)



Taiwan CDC  
LINE@



STAY HEALTHY

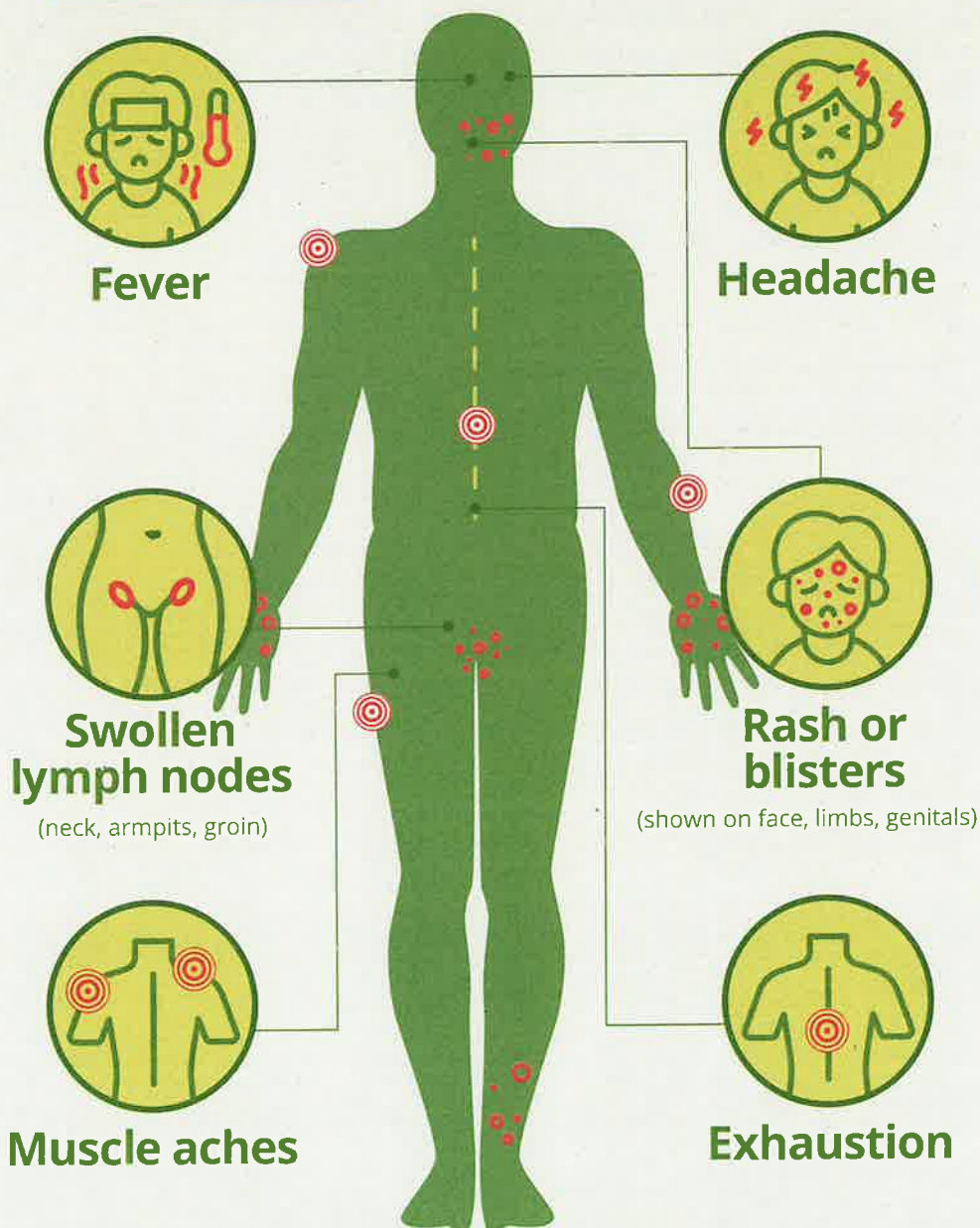


# What is MPOX?

Mpox is a viral zoonotic disease. Sustained person-to-person transmission has been confirmed outside of endemic areas.



## Symptoms



## How it spreads



Intimate contact with an infected person or direct contact with patient's respiratory secretions, broken skin or mucous membranes, as well as contaminated objects



Contact with infected animals



Respiratory droplet transmission

## Current situation

Mpox cases have been identified in many countries in Europe, the Americas and other regions



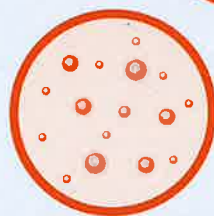
If you think you may have mpox, seek medical help immediately and inform your healthcare provider of your travel and contact history.





# 注意 猴痘

你該這樣做

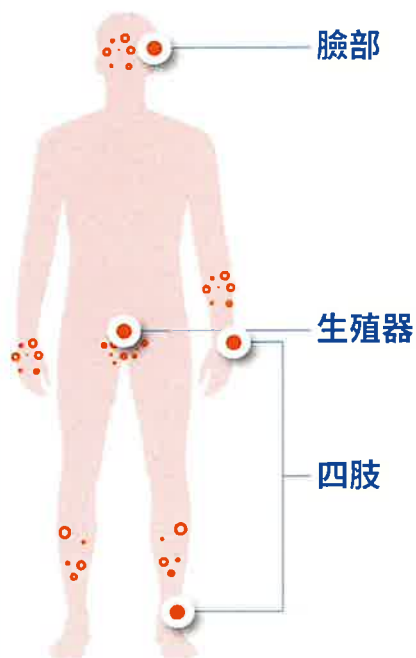


國內已有本土猴痘案例，民眾若前往流行地區或國內高風險場域，應避免與不特定人士親密接觸。



如有任何疑似症狀，請佩戴口罩並立即就醫告知旅遊史、高風險場域暴露史與接觸史。

## + 症狀好發部位



## + 猴痘症狀

出現不同型態的皮膚病灶，如：皮疹、水泡、膿疱



## + 可能伴隨症狀



衛生福利部疾病管制署  
TAIWAN CDC



[www.cdc.gov.tw](http://www.cdc.gov.tw)



1922防疫達人  
[www.facebook.com/TWCDC](https://www.facebook.com/TWCDC)



Taiwan CDC  
LINE@

廣告



# Mpox Alert:

## Here's What You Should Do

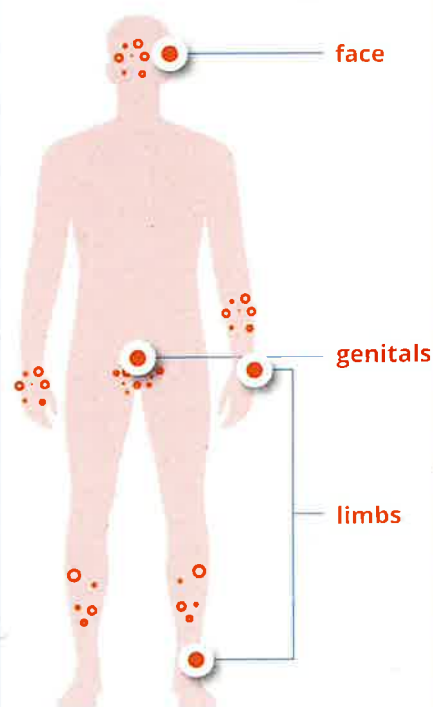


There have been cases of Mpox reported in Taiwan. If you're planning to travel to areas with high prevalence or high-risk premises venues, avoid close contact with unknown people.



If you experience any symptoms, wear a mask and seek medical attention immediately. Inform your doctor about your travel history, history of exposure to high-risk premises venues, and contact history.

### + Symptom onset site :

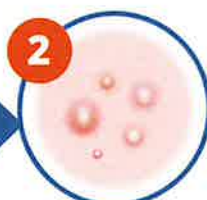


### + Symptoms of Mpox :

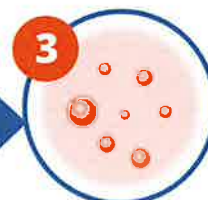
Include the appearance of various skin lesions such as rashes, blisters, and pustules on the face, limbs, and anogenital region.



Rashes



Blisters



Pustules

### + Other possible symptoms :



fever



chills/shivering



swollen lymph nodes  
(near the ear, axilla, neck,  
or groin.)



headache



衛生福利部疾病管制署  
TAIWAN CDC



[www.cdc.gov.tw](http://www.cdc.gov.tw)



1922防疫達人  
[www.facebook.com/TWCDC](https://www.facebook.com/TWCDC)



Taiwan CDC  
LINE@

